



10 Sherburn Street, Cleethorpes, North East Lincolnshire, DN35 8TQ
£265,000

Key Features:

- Bay Fronted Semi Detached Home
- Unique Lifestyle Opportunity
- Short Walking Distance Of The Seafront
- Immaculately Presented Modern Interior
- Charming 'Old World' Garden
- Three Good Sized Bedrooms
- Spacious Dual Aspect Lounge
- Dining Kitchen
- Family Bathroom & Downstairs WC
- Large Barn - Offering Huge Potential

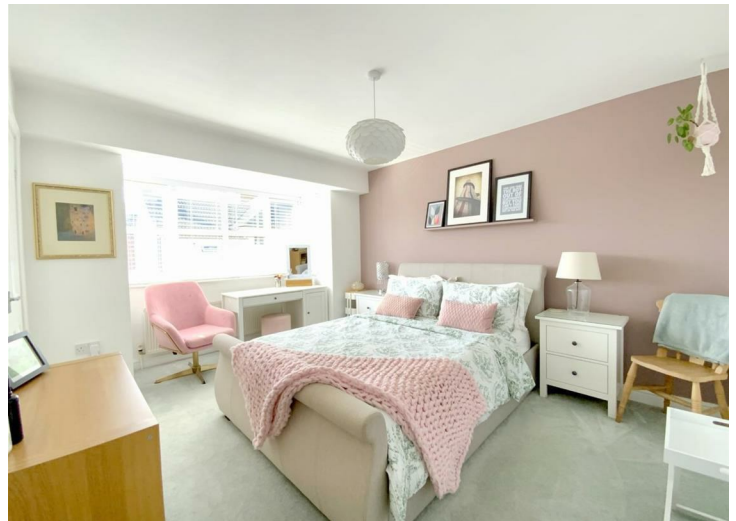
This individual three bedroom semi detached home offers a blend of modern living and traditional charm, set within a generous wide plot in one of the area's most popular locations. Just a short walk from the town centre, seafront, and the independent shops, bars, and cafes of Sea View Street, this property presents an exceptional lifestyle opportunity.

Inside, the home features a modern interior throughout, comprising a spacious dual aspect lounge with patio doors to the rear, and a stylish kitchen perfect for everyday living and entertaining. There are three good sized bedrooms, a family bathroom and the added convenience of a downstairs cloakroom/WC.

The garden is a standout feature of the home, designed with an old-world feel, it offers an ideal setting for both quiet relaxation and outdoor entertainment. Adding to its appeal is the former garage now used as a dedicated dining and socialising space - perfect for year-round use.

A further rare advantage is the large barn situated within the plot, offering superb potential - whether you're dreaming of a home studio, a games room/bar, workshop or even a business space, subject to any necessary permissions.

A truly unique property, offering ideal family living space both inside and out, flexibility of future use, and the convenience of being close to the very best of the area. Early viewing is highly recommended.



ENTRANCE HALL

With staircase to the first floor, and oak effect LVT flooring which continues throughout the ground floor.

LOUNGE

22'8" x 10'9" (6.92 x 3.30)

Of dual aspect, having a bay window to the front and patio doors opening onto the rear garden. With a classic style fireplace incorporating a coal effect gas fire, granite back and hearth.

DINING KITCHEN

19'6" x 10'7" (5.96 x 3.24)

A well-appointed kitchen, fitted with a range of shaker style units, and contrasting worktops inset with a stainless-steel sink. Built-in oven, induction hob, integrated fridge/freezer and dishwasher, and space for laundry appliances. Of dual aspect, with access onto the rear garden.

CLOAK/WC

5'6" x 2'9" (1.68 x 0.84)

Fitted with a pedestal basin and WC. Built-in storage cupboard housing the gas central heating boiler.

FIRST FLOOR LANDING

With a rear aspect window, and access to the loft.

BEDROOM 1

14'5" x 10'10" (4.41 x 3.32)

With a bay window to front aspect, and built-in double wardrobe.

BEDROOM 2

11'4" x 10'7" (3.47 x 3.24)

To front aspect.

BEDROOM 3

7'10" x 6'6"; 10'1'8" (2.40 x 2.; 3.1)

To rear aspect.

BATHROOM

7'3" x 7'9" (2.21 x 2.37)

Fitted with a pedestal basin, WC, and panelled bath with shower over - dual shower heads. Heated towel rail.

OUTSIDE

The property sits on a wide plot with a driveway to the front and side access providing potential for additional parking to the rear. The established garden is spacious and characterful, mainly lawned with patio areas, and a vegetable garden complete with a potting shed. A former garage has been converted into a practical garden room - ideal for year-round dining and entertaining, while the large barn offers exciting potential and opportunity - adding even more versatility to this unique outdoor space (includes mechanical pit).

GARDEN ROOM

16'0" x 11'9" (4.89 x 3.59)

BARN

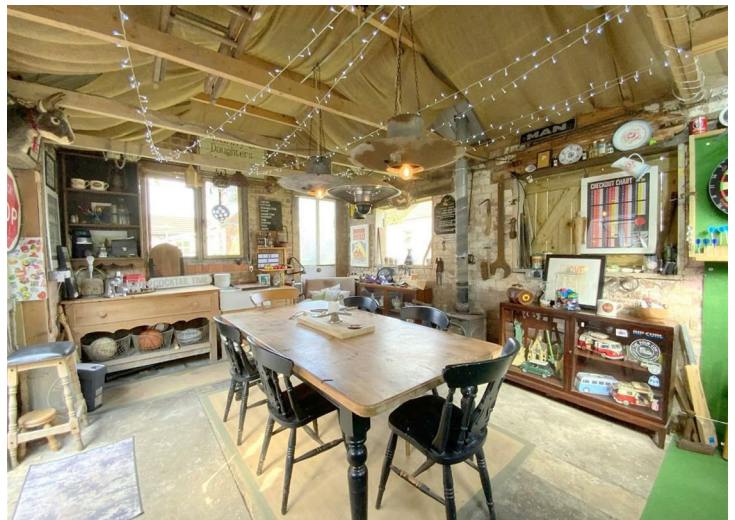
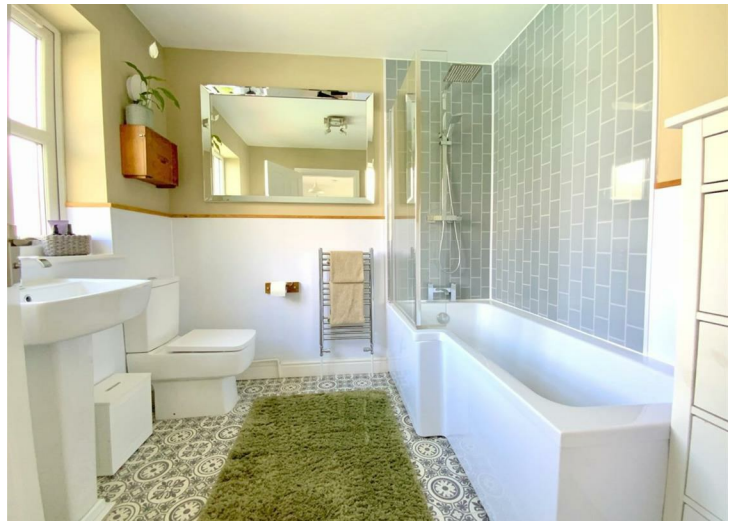
21'4" x 12'2" (6.52 x 3.73)

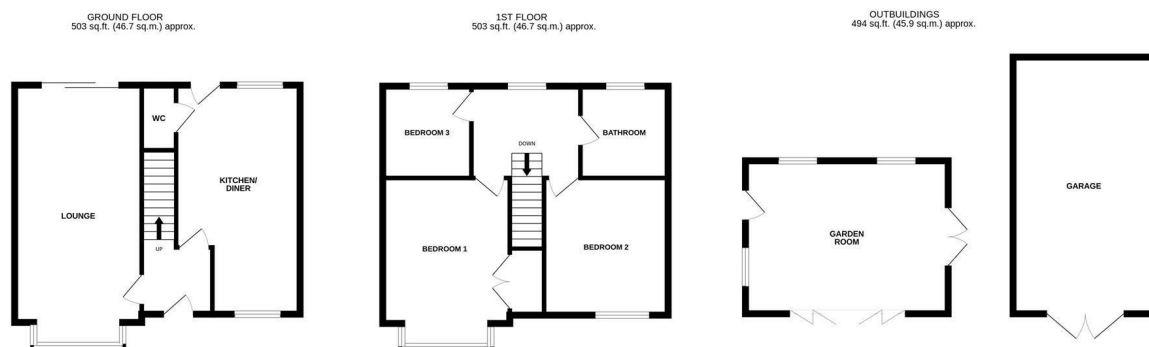
TENURE

FREEHOLD

COUNCIL TAX

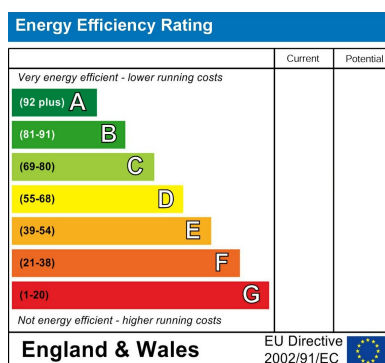
C





TOTAL FLOOR AREA: 1499 sq.ft. (139.3 sq.m.) approx.

Whilst every attempt has been made to ensure the accuracy of the floorplan contained here, measurements of doors, windows, rooms and any other items are approximate and no responsibility is taken for any error, omission or mis-statement. This plan is for illustrative purposes only and should be used as such by any prospective purchaser. The services, systems and appliances shown have not been tested and no guarantee as to their operability or efficiency can be given.
Made with Metropix ©2025



Viewing

By appointment only.

Tenure

We are advised by the vendor that the property is: As Above However, prospective purchasers should have the tenure of this property confirmed by a solicitor.

Additional Information Local Authority: North East Lincolnshire Council Telephone 01472 313 131

Services: All mains services are available or connected subject to the statutory regulations. we have not tested any heating systems, fixtures, appliances or services.

DISCLAIMER - IMPORTANT NOTICE REGARDING SALES PARTICULARS

Although we have taken great care to ensure the accuracy of the information contained in these particulars, we specifically deny liability for any mistakes, omissions or errors and strongly advise that all proposed purchasers should satisfy themselves by inspection or otherwise, as to their correctness, prior to entering into any commitment to purchase. Any references to the condition, use or appearance of the property or appliances therein, are made for guidance only, and no warranties are given or implied by this information. It is not the Agents policy to check the position with regards to any planning permission or building regulation matters and as such all interested parties are advised to make their own enquiries., in order to ensure that any necessary consents have been obtained. Measurements are taken from wall to wall unless otherwise stated, with the metric conversion shown in brackets. Any plans or maps contained are for identification purposes only and are not for any other use but guidance and illustration. The Agents have not tested any apparatus, equipment, fixtures, fittings or services including central heating systems and cannot therefore